

## Entering / Browsing / Borrowing / Returning

### Entering

Available for academic research and study purposes.  
Please fill out the application form at the service counter.  
\*Please bring identification.

### Browsing

The Medical Library holds specialized academic materials in the fields of medicine, dentistry, pharmacy, and nursing. Anyone can browse and make copies of materials, not only those affiliated with Kyushu University.

Some databases and e-journals provided by the library are also available. Please apply at the service counter.

### Borrowing

**Only alumni of the hospital district** may borrow materials.  
A library card is required to borrow materials, so please apply at the service counter.

\*It cannot be issued on the same day.

Period: 8 days for books and 2 days for magazines  
(2 renewals allowed)

Limit : 3 items

**Materials below are in-library use only :**

Reference books, rare books and audio-visual materials

### Returning

Please return library materials at the circulation desk.

If you have not returned by the due date, your borrowing privilege will be suspended.

When the library is closed, the book drop on the left side of the entrance is available.

### Library Catalog

#### ■ Collections

<https://catalog.lib.kyushu-u.ac.jp/en>



'Collections' is a search platform of Kyushu University materials.

You can search for library holdings both in print and electronic formats.

## Please mind your manners in the Library

- ◆ Return items to their proper shelf locations after reading.
- ◆ Be quiet and do not disturb other users.
- ◆ Do not leave your wallet and other valuables in the seat.
- ◆ Calls are allowed only at the cell phone booth on the 2nd floor.
- ◆ Eating outside of the 1st floor Browsing Room is prohibited.

Light Meals, Drinks Without Lid	Bottled Drinks & Canteens
 Allowed Only in the Browsing Room	 Allowed

### Ask A Librarian

#### Circulation Section

TEL: 092-642-6037 FAX: 092-642-6041

E-mail : [tieetura@jimu.kyushu-u.ac.jp](mailto:tieetura@jimu.kyushu-u.ac.jp)

#### Inter-Library Loan Section

TEL : 092-642-6039 FAX: 092-642-6041

E-mail: [tirsougo@jimu.kyushu-u.ac.jp](mailto:tirsougo@jimu.kyushu-u.ac.jp)

#### Reference Section

TEL: 092-642-6040 FAX: 092-642-6041

E-mail: [tiasanko@jimu.kyushu-u.ac.jp](mailto:tiasanko@jimu.kyushu-u.ac.jp)

#### Acquisition & Cataloging Section

TEL: 092-642-6035 FAX: 092-642-6041

E-mail: [tiuukemo@jimu.kyushu-u.ac.jp](mailto:tiuukemo@jimu.kyushu-u.ac.jp)

〒812-8582 Maidashi, 3-1-1, Higashi-ku, Fukuoka  
<https://www.lib.kyushu-u.ac.jp/libraries/medical>

# Kyushu University Medical Library

## Information (for visitors) 2023

### ■ Opening Hours

Monday - Friday 9:00~21:00

Sat, Sun, and  
National Holidays 9:30~17:00

### ■ Closed

Aug.11 – 16

Nov.23

Dec.28 - Jan.3

Please check the library website about temporary closure and shortened opening hours.

## Facilities

The Medical Library underwent renovations beginning in June 2021 to improve aging facilities and enhance functionality, and had its grand opening on October 6, 2022. The interior and facilities have been renewed, making the space more comfortable to use.

### 1F



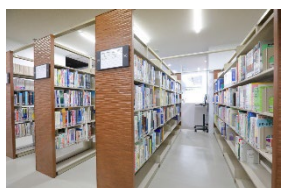
#### Browsing Room

You can relax, eat and drink.



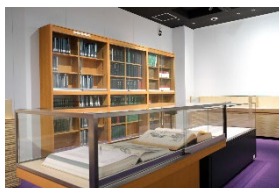
#### Active Learning Room

Conversation is allowed in this area.



#### Bookshelves

These shelves hold frequently used study books.



#### Exhibition Room

This room displays a collection of old medical books and other items.

### 2F・3F



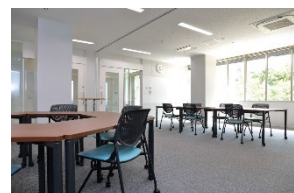
#### Study and Reading Room

This room is suitable for long hours of study.



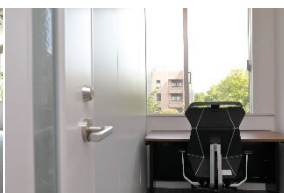
#### Bookshelves

The bookshelves house a collection of approximately 400,000 books.



#### Group Study Room & Individual Study Room

Please make a reservation in advance through My Page.



## Use of Facilities and Materials

### Research

Study and Reading Rooms are available for browsing materials in the library.  
Group Study Rooms and Individual Study Rooms are not available.  
You may eat food and have drinks at The Browsing Room.

### Search terminals

Search terminals are located throughout the library.

### Copy Machine

There are 2 copy machines in the library (self-service).  
\*Reproduction in libraries is subject to legal limitation. You are allowed to make copies only when it is for non-profit use, single-copy per capita, and the number of copies is less than half of total pages of the items.

### PC

There are 2 computers (Chromebox) available in the e-learning and audiovisual booth.

\*Application is required for use.

### Mail Order

We don't accept applications from individuals.  
Please apply through your local public library.

### Reference

We will assist you in researching documents related to our collection. However, time-consuming research may be denied. Requests can be made by e-mail, telephone, or at the Reference Desk.

Reference Section

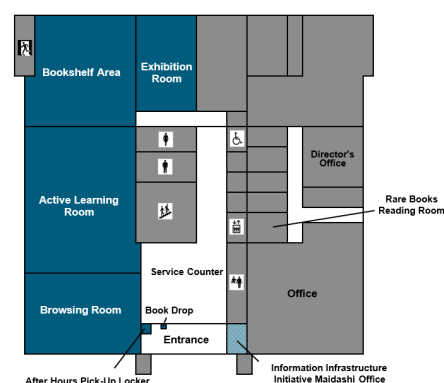
TEL : 092-642-6040

E-mail: [tiasanko@jimu.kyushu-u.ac.jp](mailto:tiasanko@jimu.kyushu-u.ac.jp)

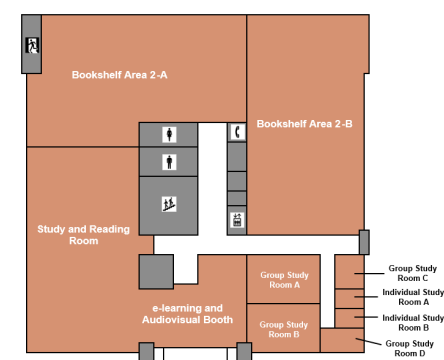
## Floor Maps

The Medical Library's materials are mainly journals and specialized books in the fields of medicine, dentistry, pharmacy, nursing science and their adjacent areas. Medical books are classified by the National Library of Medicine Classification System (NLMC).

### 1F



### 2F



### 3F

