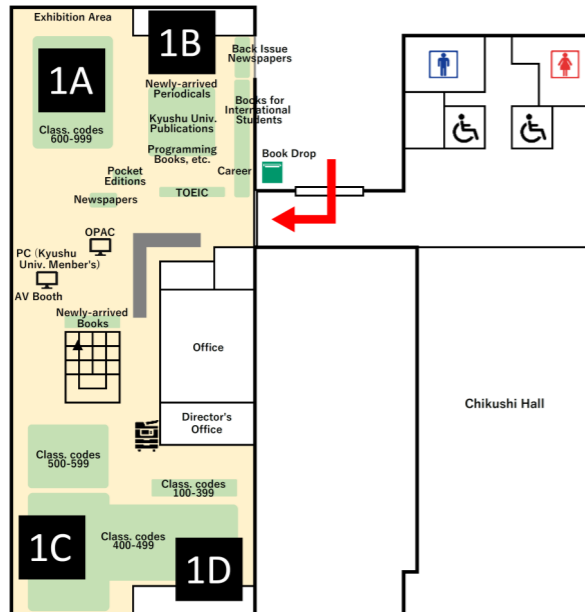


Floor Map

Library 1F (C-CUBE 1F)



Library 2F (C-CUBE 2F)

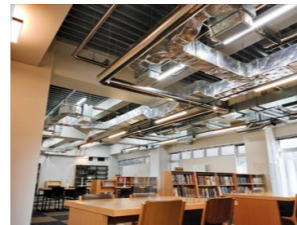


- Please apply at the counter to use the orange rooms.
- Study Room is not available for online classes.

2023.3

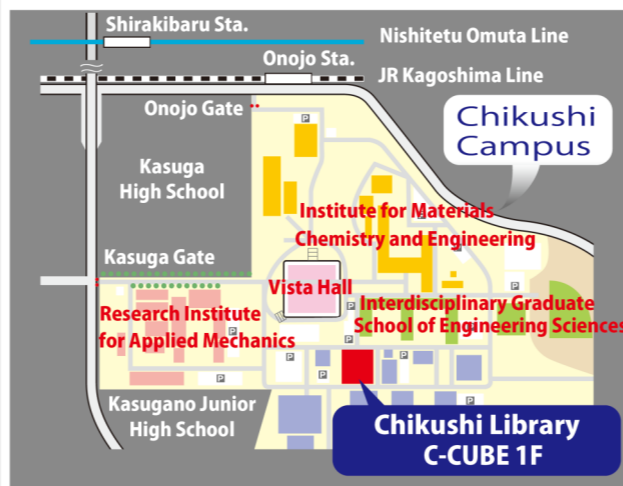
Precautions

- Food or beverages may be kept from being brought or consumed in our library.
*Plastic and other lidded bottles are permitted.
- Please be sure to carry your wallet and valuables.
- Ensure to leave library materials or personal belongings unattended for long periods to secure seats.
- Online lectures must be taken in the designated places.
- Disinfectant solutions and thermography cameras are available.
- Use Biblio Cookies on the 2nd floor for group learning.



Access

*8 min. walk from JR Onojo Sta. *20 min. walk from Nishitetsu Shirakibaru Sta.



Kyushu University Chikushi Library

〒816-8580 6-1, Kasugakoen, Kasuga-city, Fukuoka

TEL: 092-583-7020

E-mail: srttosh@jimukyushu-u.ac.jp

Kyushu University Chikushi Library

User Guide
for university members



Opening Hours

Weekdays 9 a.m. - 8 p.m.
Saturday 10 a.m. - 6 p.m.

Closed

- Sunday / National Holidays
- Summer-Holidays in mid-August
- The year-end and New Year Holidays

Please check the library website

- Opening hours may vary from the times listed above.



@QLib_info



@kyushuunivlib



<https://www.lib.kyushu-u.ac.jp/>

Check It !!

Entrance / Exit Gates

- Student / Staff ID are needed to enter the library.
- When you leave the library, if you carry out library materials without checking out properly, the security system sounds **alarms** at the gate.

Library Card

- Library User Cards are as follows.

Undergraduate / Graduate	Student ID
Non-Degree / Student	Library Card
Faculty / Staff	Staff ID or Personal Cards
Professor Emeritus	Professor Emeritus Cards

Website

Kyushu U Library website

- PC / Mobile: <https://www.lib.kyushu-u.ac.jp/en>

Collections, Book search system

- This service allows you to search and locate for the library materials possessed by Kyushu U.
- You can connect to Kyushu U network with your own PC or other devices via wireless LAN, kitenet or edunet in our library.

My Page, Online Library Service

Various services of Kyushu U Library can be used on the website. The following services can be used even off-campus as long as you can connect to the Internet.

You need to login with your SSO-KID

- Inter-Campus Delivery
- Reservation of materials
- Inquiries materials that someone has borrowed or reserved
- Renewing your own borrowed
- Application for a photocopy of materials and Interlibrary Loan Service
- Book Purchase Request

Reading

- You can freely access materials in the library except for some materials.
- Return materials to the original location after use.
- Ph.D dissertations can only be viewed inside the library. Please make active use of Kyushu U Institutional Repository.

Borrowing

Borrowing

	Numbers	Loan period
Books	10 items	2 weeks
Periodicals	2 items	2 days

- Newspapers, reference books, and audio-visual materials can only be used inside the library.

Reservation

- If another user checks out the book you need, you can make reservations by clicking the "Reserve" button on the search result page on the website.

Renewal

- Only for books, Unless other users reserve them, you can renew items on the "**My Page**" by the due date. The maximum number of extensions is different for each branch library.
- Books of Chikushi Library can be renewed **twice**.
- Periodicals cannot be renewed for checkout.

Note:

- In case you damage or lose materials, you have to compensate for them.

Returning

- Even when the library is open, you can return to drop-box.
- You can return materials at any library of Kyushu U.
- While your borrowing book is overdue, you cannot borrow a new one.

E-Resources

Most E-Resources are accessible only via the university network due to agreements with publishers. If you'd like to access them from an off-campus location, sign in the website with your SSO-KID. The main contents are as follows.

Electronic journal

- Electronic versions of major academic journals

Reference search

- Web of Science (Coverage: International)
- Scopus (Coverage: International)
- CiNii (Coverage: Japanese)

Photocopying

Photocopy in the library [Charged]

- A coin-operated machine is available.
(Black and white only / 10 yen per sheet)

Photocopy request [Charged]

- If a periodical that includes an article you need is located at other libraries of Kyushu U or other institutions, you can request it online.
- Photocopying of materials is permitted within the limits of Japanese copyright law. One copy of a part of the materials is allowed per person for research purposes.
- Beginning in FY2020, the cost of ordering copies is subsidized based on certain conditions and may be free of charge.

Book Loan

Inter-Campus Book Delivery Service [free]

- You can request materials from other libraries of Kyushu U and receive them at your campus. The request can be made on the search result page in the collections.

Interlibrary Loan Service [Charged]

- If a book is not at any libraries of Kyushu U, you can request it from other institutions online.